



Pfadibewegung Schweiz
Mouvement Scout de Suisse
Movimento Scout Svizzero
Moviment Battasendas Svizra

CANDIDATURE ROVERWAY 2028

TABLE OF CONTENTS

Table of contents	2
0. Motivation	3
1. Introduction	5
1.1 Swiss Guide and Scout Movement / Mouvement Scout de Suisse	5
1.2 Switzerland	5
1.3 Why we offer to host	6
1.4 Corporate governance	7
2. Theme and Motto	10
2.1 Theme	10
2.2 Motto	11
2.3 Educational Goals	12
2.4 Framework	14
2.5 Participants	15
2.6 Languages	16
3. Programme	17
3.1 Overview	17
3.2 Paths	18
3.3 Main Camp	18
3.4 Participation & Involvement in the Planning	20
3.5 World Centres	21
4. Finances	22
4.1 Revenue	22
4.2 Fee calculation	22
4.3 Expenses	22
4.4 Budget	22
5. Logistics	24
5.1 Transportation	24
5.2 Campsite	25
5.3 Infrastructure	26
5.4 Staff	27
6. Safety	28
7. Sustainability	30
8. Communication	31



0. MOTIVATION

C'est avec beaucoup d'enthousiasme et d'excitation que l'association suisse "Roverway 2028" dépose ici sa candidature à être hôte du prochain Roverway.

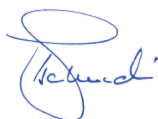
L'association Roverway 2028 a été fondée le 8 mars 2025 et son unique membre est à ce jour le Mouvement Scout de Suisse (MSdS). En cas d'attribution du Roverway 2028 à l'association "Roverway 2028", les associations cantonales du MSdS ainsi que les régions Europe de l'AMGE & OMMS seraient invitées à également devenir membres de cette association.

L'association Roverway 2028 a prévu sa gouvernance et effectué son recrutement de bénévoles de manière à assurer une haute qualité d'engagement et de professionnalisme dans l'organisation du prochain Roverway. En effet, son comité est composé de personnes qui apportent diverses compétences majeures pour la mise sur pied d'un événement de l'envergure d'un Roverway, à savoir une solide expérience en organisation de grands événements, une connaissance approfondie du scoutisme suisse et international, ainsi qu'une conviction de la pertinence d'un Roverway concernant ses aspects pédagogiques.

Dès sa nomination, le comité a travaillé en étroite collaboration avec le groupe de projet composé de bénévoles du MSdS afin de finaliser la présente candidature. Le groupe de projet, constitué depuis 2023 et également composé de personnes au bénéfice d'un bagage important en organisation de grands événements et en camps internationaux, a fourni un excellent travail tant sur le contenu de cette candidature que sur la communication vers l'extérieur et vers l'intérieur du MSdS sur l'avancée du projet. Nous leur adressons ici nos plus sincères remerciements.

Le comité de l'association "Roverway 2028" espère que le dépôt de cette candidature n'est que le début de l'aventure et que le Roverway 2028 aura lieu en Suisse. Ce serait un honneur de contribuer au développement global des personnes membres de notre mouvement mondial.

Pour le comité de l'association "Roverway 2028",



Stephan Tschudi, président



C'est avec conviction que le MSdS soutient la candidature de l'association "Roverway 2028" à être hôte du prochain Roverway.

Si la tradition des grands événements dans le scoutisme suisse est grande, l'expérience accumulée concernant la gouvernance de ces événements l'est tout autant. Depuis plusieurs dizaines d'années, une association tierce est toujours créée pour l'organisation des grands événements au sein du scoutisme suisse. Cette structure permet effectivement une meilleure répartition des risques, tout en maintenant le pouvoir décisionnel du MSdS dans les décisions soumises à l'assemblée générale de l'association tierce créée.

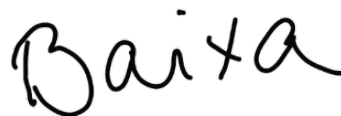
Cette forme de gouvernance a notamment fait ses preuves lors de l'organisation de notre camp fédéral 2022. Pour le Roverway 2028, le MSdS a décidé de poursuivre cette solution largement connue et appréciée à l'intérieur de l'association.

Cela a été un plaisir de suivre les avancées du groupe de projet, rejoint par la suite par le comité nouvellement formé de l'association "Roverway 2028". Les travaux effectués (dossier de candidature et étude de faisabilité) ont été présentés lors de notre assemblée générale de novembre 2024. Le projet a été soutenu par nos membres à une large majorité lors d'un vote consultatif, malgré quelques réserves énoncées. Nous pouvons donc dire que globalement nos membres souhaitent recevoir le Roverway et se sentent concernés par le projet.

Nous espérons vivement que cela n'est que le début d'une étroite collaboration entre le scoutisme suisse et les régions Europe de l'AMGE & OMMS. Nous nous réjouissons de la suite des événements.



Anaïs Berther, IC WAGGGS



Christina Egli, Présidente



Wanda Duss, IC WOSM



Philippe Moser, Président



1. INTRODUCTION

This candidature was developed on the basis of the call for bid for the Roverway 2028. It respects all key items of the WAGGGS and WOSM guidelines.

Please find attached the feasibility study that was prepared for the attention of the delegates at the Swiss Guide and Scout Movement's General Assembly in November 2024. It shows what considerations were made with regard to its members.

1.1 Swiss Guide and Scout Movement / Mouvement Scout de Suisse

The Swiss Guide and Scout Movement (Mouvement Scout de Suisse, MSdS) is the only national Guide and Scout association in Switzerland. While some local groups have a religious affiliation, the MSdS and the cantonal associations are secular.

The MSdS currently counts over 51,000 members and is organised in 22 cantonal associations and 530 local groups. Guiding and Scouting in Switzerland has grown exponentially in recent years, making MSdS by far the largest Swiss children's and youth organisation.

The 22 cantonal associations cover all cantons and language regions in Switzerland. The federal level can count on the commitment of around 200 volunteers from all over the country, as well as a headquarter based in Berne with the equivalent of around twelve paid full-time positions.

MSdS is Scouting and Guiding by young people for young people. We enable our members to acquire responsibilities early in life and develop unique skills for their professional lives.

1.2 Switzerland

Despite its small size, Switzerland has a lot to offer.

One of Switzerland's major assets is certainly its nature. Between the mountains, the countryside, the forests and the lakes, there is something for everyone. Walking, cycling or swimming are just a few examples of the many ways to enjoy nature in Switzerland.

The cultural offer is attractive. Especially in the cities, art lovers and historians can lose themselves in the countless museums and cultural offers. Educational and scientific activities also cater for innovative minds.

In summer, the days are generally quite hot and the nights rather cool. When temperatures rise, the many bathing spots (lakes, rivers, public swimming pools), forests and mountainous regions



are ideal for cooling off. On the other hand, if the weather is particularly bad, Switzerland has a very good infrastructure to keep the population safe.

Another highlight of Switzerland is the quality of its reliable and close-knit public transport network consisting of trains, buses, trams and boats.

Of course, Switzerland is famous for its chocolate and cheese. But there are many other culinary specialities, often unique to each region.

Finally, Switzerland stands out for its multilingualism and multiculturalism. With its four national languages (German, French, Italian and Romansh) and numerous regions, each with its own culture, history, rites and traditions, Switzerland lives diversity every day.

What unites us all is that our direct democracy allows Swiss citizens to be involved, vote and influence social and political developments.

1.3 Why we offer to host

Switzerland has a long-standing passion for and tradition of international camps. In 1931, Switzerland welcomed Scouts to Kandersteg for the world's very first Moot. Since then, two more Moots and Eurolife2001 have been held in Switzerland. The world centres Our Chalet and KISC in the heart of our mountains have also been contributing to the year-round presence of international camps in Switzerland for decades. We wish to continue to live this spirit of international Guiding and Scouting in Switzerland by organising the next Roverway.

Our experience with large camps is also extensive. Many of our cantonal associations regularly organise cantonal camps that welcome around 2,000 participants and involve 500 volunteer staff members each. Every 14 years, there is a Swiss National Jamboree. In 2022, we organised the largest Scout camp of all times in Switzerland. 35,000 participants, leaders and staff met for a fortnight in the Swiss mountains. The Swiss National Jamboree was a great success. The commitment of nearly 5,500 volunteers and an excellent environmental record are among our proudest achievements. The importance of supporting young people in terms of mental health and finding a balance in linguistic and cultural representation are some of the biggest lessons learnt.

We want the next Roverway to benefit from our experience of major events, particularly by building on the momentum and learnings generated by the Swiss National Jamboree 2022.

Despite all the positive signs, there are also challenges in the realisation of such an endeavour. The logistics and financial aspects are always challenging. The short planning horizon (by Swiss standards) as well as the human resources are other challenges for us, but ones that can be overcome. We have already worked out some solutions, which we describe in the following.



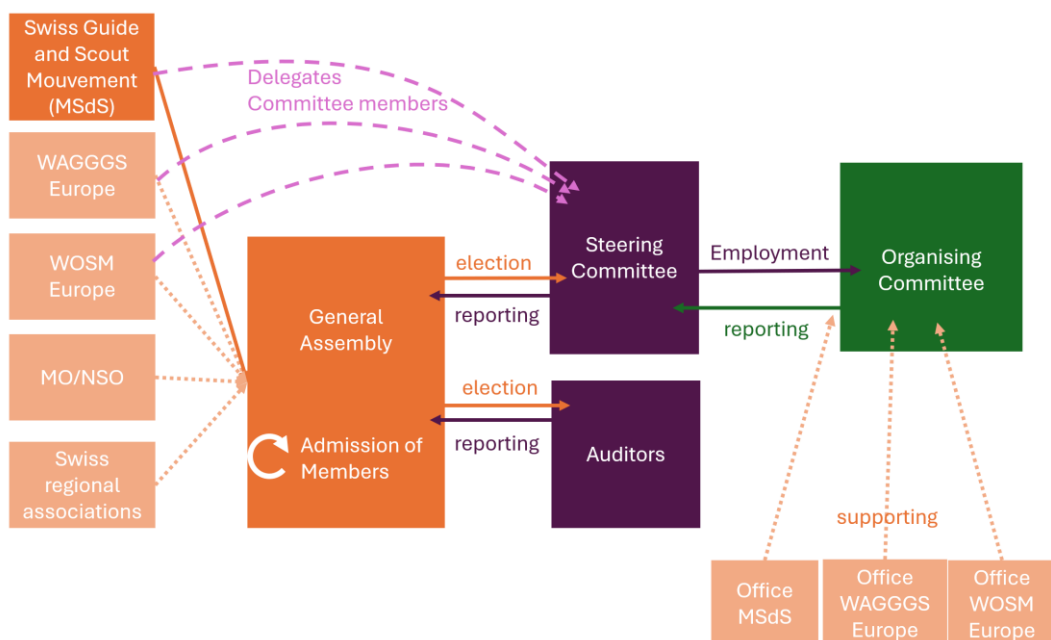
1.4 Corporate governance

The following chapter outlines the governance structure of the organisation for the Roverway 2028. The Roverway 2028 will be organised as a separate legal entity from MSdS for the following reasons:

- Positive experience with this structure (e.g. several national camps)
- Financial security, targeted allocation of resources
- Lean organisation and efficient decision-making processes
- Legal and organisational independence
- Easier implementation of international guidelines and requirements
- WAGGGS and WOSM have a say thanks to association membership and a seat on the Steering Committee
- Focus on project objective without being distracted by the priorities of the national association
- Tax exemption despite commercial tasks

The by-laws of the association (formally founded on March 8th, 2025) clearly outline the different roles and responsibilities. Delegating responsibilities and decision-making authority as close to the planning and execution level as possible is essential.

A principle of shared leadership is adopted, emphasising both gender balance and youth involvement. This means that all top-level units will be led by two individuals with different genders, backgrounds, and experiences.



1.4.1 Association

Both natural persons (individual members) and collective members are eligible to join the association. Collective members may include non-profit organisations committed to promoting the Scouting and Guiding movement.

International collective members are entitled to one vote each. Swiss collective members receive one vote for every 100 of their registered members. It is the responsibility of each collective member to determine how many representatives will cast their votes. Individual members are entitled to one vote each.

1.4.2 General Assembly

The Ordinary General Assembly is held annually. The Board of Directors may convene Extraordinary General Assemblies as needed. Upon the request of one-fifth of the members, the Steering Committee is obliged to call an Extraordinary General Assembly.

The General Assembly holds the following irrevocable duties and competencies:

- a) Approval of the previous General Assembly's minutes
- b) Receipt of the auditors' report and approval of the annual accounts for the preceding year or for the period since the last General Assembly
- c) Discharge of the Steering Committee
- d) Election of the Steering Committee, its chairpersons, and the auditors
- e) Determination of the membership fee
- f) Decisions on motions submitted by the Steering Committee and members
- g) Amendments to the Articles of Association
- h) Admission of new members
- i) Adoption of key regulations
- j) Decision on the dissolution of the association and the allocation of liquidation proceeds in accordance with Article 11 of the Articles of Association

1.4.3 Steering Committee

The Steering Committee consists of 4 to 9 members, and is composed as follows:

- a) 1 to 2 members nominated by the MSdS' Steering Committee
- b) 1 to 2 specialists in major event planning
- c) 1 representative from the canton hosting the camp
- d) 1 to 2 individuals serving as chairperson(s)
- e) WAGGGS and WOSM may each appoint one member to the Steering Committee

The Steering Committee is responsible for developing the overall concept of the camp. It appoints the Camp Management and mandates them with the implementation of the concept. The Steering Committee oversees the finalisation and evaluation of the camp.

It is authorised to enter into contracts and delegate this authority to the Camp Management.



1.4.4 Organising Committee / Camp Management Team

The Organising Committee is composed of the responsible leads of the various planning units, such as campsite, paths, programme, food security, and others. All management roles will be held under a shared leadership model, with two individuals per role.

In accordance with the Roverway Guidelines, at least 25% of the Roverway Crew shall be no older than 30 years of age.

The Camp Management is responsible for implementing the camp concept, carrying out the camp, and evaluating it afterwards.

1.4.5 Auditors

The General Assembly elects at least two natural persons or one legal entity to audit the annual financial statements and report to the General Assembly (audit body). The audit body is made up of the same persons as in the MSdS.

1.4.5 Role of WAGGGS Europe and WOSM Europe

We strongly encourage WAGGGS Europe and WOSM Europe to take an active role in the organisation of the event. Two levels of engagement are foreseen:

1. As a member of the Steering Committee to ensure good governance and to have a direct link to both European Committees
2. As part of the Camp Management Team to support and ensure the high quality of the educational programme and deliver content.



2. THEME AND MOTTO

2.1 Theme

The last few years have been defined by different situations and events of varying overwhelming impact. Although we live in a global and connected world, there are still divides, doubts and fears, which particularly impact the youths, who are facing a rapidly changing society. The uncertainty about what is to come is unsettling to some and a significant source of anxiety for others. Therefore, our edition of the Roverway aims to remind and show the participants and staff that the experiences, skills and capabilities they have acquired and developed as a Scout or Guide can help them be active European citizens who are prepared for the future.

The MSdS believes that the Guiding and Scouting Movements play an essential role in acquiring skills. The movements offer an extraordinary and safe learning environment where Scouts and Guides can explore their limits and capabilities, develop their ideas, implement them on their own or in a group and gain new and diverse experiences and skills. In the summer of 2022, a **SCOUT** research project (**S**tudy on **C**ompetence Development in **O**ut-of-school **S**ettings) was conducted in Switzerland. 650 MSdS members between the ages of 14 and 17 were analysed to see whether joint camp activities in nature promote well-being, mental health and life skills. The results are clear: After just ten days at camp, the young people developed a greater well-being and underwent other positive changes. The greatest positive development was seen in the ability to contribute to the community. By promoting self-esteem, self-control and assertiveness, the youths were better able to represent their own opinion to others¹.

Furthermore, from June 2023 until May 2024, the MSdS launched a campaign to raise awareness of Scouting and Guiding as a school of life and sensitise the wider public to our special skills. The message: Both active and former Scout members contribute considerably to our society thanks to the significant life skills and diverse range of capabilities they have learnt. They can offer a lot of added value, not only to their own but also to their professional lives and futures. As the campaign says: Learnt is learnt – making Scouts and Guides committed, engaged and conscientious global citizens.

This happens, because Scouting and Guiding is plentiful and holistic. It is a physical adventure in nature, where we deal and interact with the world and our own limited resources. It is also an

¹ “[A] camp offer[s] the young people plenty of creative space to realize their own ideas and at the same time demand[s] joint decisions based on democratic principles. By organizing camps in nature, youth organizations can make an important contribution to PYD. Such camps not only promote physical activity and provide enjoyment, but also help young people to develop practical and socio-emotional skills. In addition, camp activities contribute to a better well-being, and an increased motivation for community building.” (Kirchhoff E, Keller R and Blanc B (2024) Empowering young people—the impact of camp experiences on personal resources, well-being, and community building. *Front. Psychol.* 15:1348050. doi: 10.3389/fpsyg.2024.1348050)



adventure of the mind as Scouts are curious and eager to learn – either on their own or by learning with and teaching each other. This is also where the adventure of friendship begins. While Scouts and Guides are capable individuals, they learn how to thrive in groups and how to utilize their similarities and differences to promote co-operation, peace and goodwill. No matter the background, culture, or interest, Scouting or Guiding offers something for everyone who wants to explore, deepen, solidify or build upon their capabilities and knowledge.

Thus, we want to offer a range of fun, inspiring and engaging activities that encourage movement, personal and intellectual growth, and community, empowering the rovers both as individuals and as members of groups in today's world and for their future. The programme should appeal to every rover in a way that suits them, offering diverse topics, opportunities, and methods – not only to showcase what rovers can achieve but also to highlight the values, responsibilities, and contributions of Scouting and Guiding and to promote their image and practices. To achieve this, we aim to focus on specific educational goals that reflect the values, knowledge, and skills of Scouting and Guiding, as well as the needs and aspirations of the rovers.

Switzerland is the perfect backdrop for this empowerment, as we not only offer varied breathtaking natural landscapes for exploring, but also cultural, historical and political ones, with, for example, our four national languages and direct democracy. The Roverway 2028 will also introduce the participants and staff to the MSdS with its traditions and customs. Initiatives such as «Pfadi Trotz Allem» (Scouts despite everything), which organises activities for children and teenagers with mental, physical, or multiple disabilities or «Pfasyl», a programme offering Scouting opportunities for children and teenagers residing in asylum centres, empowering them and fostering their skills will be specifically highlighted.

2.2 Motto

As we are committed to reminding the rovers of the valuable experiences and skills they can gain from the Scouting and Guiding movements — along with offering an inclusive and diverse environment that allows them to make new friends, create lasting memories, discover their similarities and differences, and celebrate their shared passion for Scouting and Guiding — the Roverway 2028 motto is **Battasendas**. It means **Scouts/Guides** in Romansh, the fourth national language of Switzerland.

The word was specifically chosen to represent Switzerland as the host but also to offer an unfamiliar common ground to unite on, as we believe every participant, no matter their native language, is able to pronounce the word and relate to its message. It is a word that holds a myriad of meanings: It can mean friendship, community, campfires, overcoming borders and limits, coming together, development, growth, nature, action, fun, happiness and so on - it can mean whatever Scouting or guiding means to the rovers.

2.2.1 Logo

Our Roverway logo is designed to represent the event's theme, motto and host country. It serves as a visual reminder of why we come together: to learn, to grow, and to enjoy the adventure of Scouting and Guiding.



The title is shaped to resemble a mountain range, highlighting one of Switzerland's striking landscapes and placing the participants in the heart of nature. The three animals and their different colours do not only represent Swiss wildlife but also symbolise the diversity of Scouts and Guides coming together at the Roverway. Each participant brings a unique background, along with skills, strengths, and a wide range of experiences and perspectives that will contribute and enrich the camp.

The campfire, an essential part of Scout and Guide life, holds different meanings and traditions across nations and contingents. Yet, it remains a universal symbol of connection, storytelling, and shared experience – highlighting the traditions and moments that connect and unite us, shape our Scouting or Guiding journey, and help create lifelong memories and a better future.



2.3 Educational Goals

To achieve this goal of highlighting the significance and opportunities of the Rovers' skills and capabilities to help them become proactive leaders and European citizens, the Roverway planning team has established five educational objectives. These objectives represent the themes that the Roverway will explore, impart, and promote, based on the educational methods and guidelines of the European Scouts, Girl Guides, and Girl Scouts to make it development-oriented, needs-based, and holistic. Through this, the Roverway 2028 strives to design a programme that is appealing and beneficial to Rovers from different social and cultural backgrounds with differing skills, abilities and interests.



2.3.1 Youth Empowerment and Youth Participation: Encouraging the Leaders of Tomorrow

The Roverway 2028 aims to support the participants' and staff's development into independent personalities. The aim is to prepare them to get involved in today's society and the future by understanding the impact they can have, even at a young age, and contemplating their societal roles and possible contributions to upcoming challenges.

Rovers will form their own opinions, take responsibility for themselves and self-critically scrutinise their actions and thoughts. This also includes knowing and using their potential while being self-confident and self-critical and gaining a deeper understanding of their strengths and weaknesses. They will learn how to communicate by actively participating in constructive debates, critiquing, challenging, and exploring their own perspectives, those of others and society.

2.3.2 Diversity and Inclusion: Knowing Our Value

By employing internationally mixed paths and subcamps, the Roverway 2028 actively advocates for an inclusive camp to impart the meaning of being in a diverse and inclusive organisation to the Rovers. Rovers will be encouraged to embrace openness, tolerance, and curiosity towards others through discussions on diversity and inclusion to better understand their societal position and the possible diversity challenges for others.

The Rovers will examine their own personality, faith and culture and respect the other diverse forms of personalities, spirituality and traditions they encounter. They will be invited to scrutinise and break existing limiting societal expectations and structures. The Roverway 2028 will not accept bullying, discrimination or racism towards anyone. Everyone is welcome and will be included and empowered, regardless of social background, religion, sexual orientation, race, culture, gender, physical abilities or skin colour.

2.3.3 Sustainability: Teaching for a Better Future

The Roverway 2028 will shine a light on the sustainable development goals and showcase engagements with global and local educational, social, economic and political opportunities and challenges. However, there will be a particularly strong focus on the environmental and sustainability opportunities and challenges, as the camp will run under a sustainability concept. The Roverway planning team promises to act on the sustainability concept and communicate and implement it with the participants.

The Rovers, in turn, will discover their society and environment along with the challenges and opportunities. During all activities, the protection of nature and social balance, equality and justice and the respectful use of the earth's resources are present and essential to the Rovers, helping them hone their skills and be creative while being environmentally and socially aware to have a positive impact on our global society's future.

2.3.4 International Friendship: Building a Tent of Knowledge

The Roverway 2028 strives to support the development of international friendships and to nurture intercultural communication. Through the patrol system, the Rovers are part of big international groups to whose success they actively contribute. In doing so, they learn to share, be open to other opinions, take responsibility, and make decisions in their group by meeting and respecting others. Through different activities throughout the camp, such as Culture Day, the



participants and staff are encouraged to engage in exchanges between different cultures and Scouting movements and get hands-on experience communicating effectively across possible barriers to find common grounds in societal possibilities or obstacles.

2.3.5 Creativity: Learning for Life

The Roverway 2028 aims to empower the individual Rovers' mental and physical health, creativity and capability. As the Roverway planning team, we believe in creating a place where diverse and creative self-realisation is encouraged and hoped for. Rovers will value and respect their body and their feelings. They will learn about their physical and emotional needs, possibilities and limits and how to deal with them while accepting and expressing themselves comfortably. Through workshops, learning by doing, solo- and teamwork, Rovers will unlock the creativity of their body and mind and will have the opportunity to express themselves using their unique creative methods, acquiring skills that are valuable at the moment and versatile for on-going personal use. Whether realising a planned idea or simply doing something for oneself, the emphasis is on self-expression and skill development.

2.4 Framework

As our educational objectives aim to encourage and support a variety of interests, abilities, skills and experiences in different areas of Scouting, Guiding, and society, they have to be correctly realised and implemented through the camp programme. A proper framework thus needs to be created.

For camp and activity planning, the MSdS has established seven methods. The Roverway planning team will use those to ensure the best programme for the participants and staff. The seven methods will influence the individual activities specifically and Scouting life in a broader sense.

2.4.1 Promoting personal progress

Scouting and guiding is where Rovers can experience things through «learning by doing» in a safe and supportive environment. Rovers are constantly setting new goals for themselves and looking for ways to achieve them. Through a varied programme, the Rovers are encouraged to take further steps in areas that interest them. Participants will be immersed in an environment that allows them to try, fail, succeed and improve. Their fun while doing so will not be neglected.

2.4.2 Law and promise

During the Roverway, the planning team wants to focus on the Scout and Guide Law. The law helps to give meaning and direction to the Rovers' lives, as it contains rules for living together and provides a guideline for their lives beyond their time as a Scout or Guide. Rovers are committed to doing their best, assisting others, and improving the world. It is the same for everyone. With the Promise, Rovers voluntarily accept and respect these Scouting and Guiding values and remain faithful to them while following the Scout and Guide Law.

2.4.3 Life in the group

Rovers will live together in small groups and actively participate in them. The patrol system is designed to give participants independence and responsibility in an unfamiliar group. Through



this, the Rovers will be challenged to navigate group life, embrace the opinions and skills of others, and find common ground, with the added support of having familiar faces around.

2.4.4 Rituals, customs and traditions

The Roverway will be inclusive of all cultures, customs, preferences, religions, and traditions – Scouting/Guiding and societal. Life in a group and the progress of each individual can be characterised by rituals that make Rovers aware of essential steps in their development. Traditions and rituals should be reflected, discussed, understood and accepted by everyone.

2.4.5 Having a say and taking responsibility

Rovers will take responsibility for themselves, their actions and others and make their voices heard. The activities during the path and main camp phases are organised by the staff or the participants in a democratic manner. This aligns with the Roverway principle, «a camp from Rovers for Rovers», as well as supporting the leaders of tomorrow, as the participants and staff will take on leadership roles from an early stage on. Through contact with other Scouts and Guides, the Rovers will experience how they can use their confidence, responsibility and voice in future Scouting and Guiding careers and general lives.

2.4.6 Outdoor life

The Roverway 2028 and its Scouting and Guiding activities will take place outdoors to the largest extent. Nature offers a change from everyday life and space for various physical and mental activities. Being close to nature increases our understanding of sustainable behaviour to care for our own health, limited resources and the environment. This method will be aided by the sustainability concept deployed throughout the camp.

2.4.7 Physical Activities

Movement is central in Scouting and Guiding activities for all age groups. Thus, it also plays a role in the Roverway, as Rovers need movement for a healthy body and mind. Through hiking, climbing, exploring and playing games, Rovers will promote their knowledge and skills and develop group life.

2.5 Participants

Participants aged 16 to 22 in the summer of 2028 will be welcomed to the Roverway. The national contingents record individual enrolments and will contact the Roverway planning team when official registrations open. All European member organisations recognised by WOSM or WAGGGS can send a delegation. Guest delegations will be able to join upon request or invitation. Rovers aged 23+ in the summer of 2028 can register as a member of the International Service Team IST.

The contingents appoint two Heads of Contingent (HoC), preferably of different genders for merged organisations, who will form the point of contact between the participants and the Roverway planning team. During the path phase, HoC are regarded as IST. In addition, the contingents also appoint one or two Rover representatives, preferably of different genders. These Rover Reps will come together with their counterparts from other contingents and will have the opportunity to positively impact, shape, and contribute to the Roverway programme by sharing



their expectations and ideas. More details on this can be found in chapter 3.4 Participation & Involvement in the Planning.

2.6 Languages

The official languages of the Roverway 2028 will be English, French and German. We also expect those to be the working languages during the event preparation (in addition to Swiss German to a lesser extent). The operational language will be English.

If needed, Italian can be added to the repertoire, and additional translations into other relevant languages can be provided upon request.



3. PROGRAMME

3.1 Overview

3.1.1 Proposed dates: Saturday 22 July - Thursday 3 August 2028

This enables most European Rovers to join the event, because it is during the summer holidays of most European countries and leaves room for programme before and after the main event.

The duration of the main camp was extended by a day, to celebrate the Swiss National Day. The entire 1st of August is dedicated to the host country and its Scout culture.

On the first day, all delegations will travel to Switzerland and partake in the opening ceremony in the evening. It will be held either at the same location as the main camp or at a more convenient location for the transfer to the paths.

During the following five days, the delegations will be split into international tribes, that will go on their selected paths, where they will get to know each other and discover Switzerland. This is followed by the main camp, including a second opening ceremony and a closing ceremony together with all participants.

Before and after the camp, time will be allocated for construction and dismantling of the campsite.

Special care will be taken, that all participants get the same opportunity to participate in all activities. If this is not possible a clear reason will be provided.

22 July	23 July	24 July	25 July	26 July	27 July	28 July	29 July	30 July	31 July	1 August	2 August	3 August
PATH						MAIN CAMP						
Arrival and Opening Ceremony	Transfer to paths / Day 1 path	Day 2 path	Day 3 path	Day 4 path	Day 5 path	Transfer to and arrival at main camp	Day 1 main camp	Day 2 main camp	Day 3 main camp	Day 4 main camp / Swiss National Day	Day 5 main camp	Departure Day



3.2 Paths

Switzerland is both rich in culture and nature. During the paths, a wide variety of activities will be provided to benefit from these traits of the host country. The participants will experience these activities in their tribes (consisting of around 60 Rovers each), which will stay the same during the whole path and later the main camp.

The topics below can be used as the subject for a path.

3.2.1 Mountains

Switzerland has two main mountain ridges: The Alps and the Jura. Both provide a unique nature which lends itself for hiking and other outdoor activities such as climbing. Switzerland is very careful in preserving its nature and there are many opportunities to support those efforts by spending a day maintaining hiking trails or restoring small habitats for local wildlife.

3.2.2 Democracy

With both a unique form of democracy and the seat of the United Nations' headquarters in Geneva, interesting political topics can be explored. While exploring related locations, current issues related to society and young people can be discussed.

3.2.3 Cities

Due to federal politics, no city in Switzerland can claim to be the cultural centre of this country. Each city and region have their unique identity. A unique cultural trench can be observed between the French and German speaking regions. By visiting one or several regions, different cultures and lifestyles can be explored and discussed. Team challenges can be a great way of getting in touch with the local community.

3.2.4 Trains

The Swiss Alps might be a natural marvel, but the trains that run through them are a technological marvel. Furthermore, a lot of the electricity required to keep the train network running comes from renewable energies (mainly hydropower). These and other sights related to transportation can be explored all over the country.

3.2.5 Science

Switzerland is home to several world-class universities and is for example contributing to particle science with the LHC (CERN) in Geneva and to space exploration with satellite instruments from Berne. With a visit to these places, fascination for science and its impact on society can be explored.

3.3 Main Camp

During the main camp, a wide variety of activities will be proposed. We wish to promote the Scouting spirit through exchange and experience related to current topics.

The programme will allow Rovers to choose activities according to the topic of the day. There will be five different topics. Except for the Switzerland and Culture Day, each topic will be run



every day, and each group will have different time slots (half or full days) for each topic, so that every participant gets the opportunity to take part in activities related to each topic.

The table below shows a possible schedule for the different topics. Days 3, 4 and 6 will be scheduled individually for each group. Days 2 and 5 will be the same for every participant.

Other activities like the faith tents or WAGGGS and WOSM tents will be available during the full duration of the main camp.

	Main Topic	Morning	Afternoon	Evening
Day 1	ARRIVAL	Arrival and setting up camp		2nd opening ceremony
Day 2	CULTURE DAY	Trying out foods & activities from other cultures	Experiencing Scouting and Guiding from other nations	(Swiss/Cultural) game night
Day 3	NATURE	Biodiversity & sustainability	Field trips	Night activities (Laser Tag, night games, ...)
Day 4	FUTURE IS BRIGHT	Communication	Scouting in everyday life	Friendship night
Day 5	SWITZERLAND	Swiss Culture & Sports Swiss Scouts	1st August bonfires	
Day 6	YOUTH EMPOWERMENT	Stronger together	Networking	Closing ceremony
Day 7	DEPARTURE	Packing and departure		

3.3.1 Culture Day

For Culture Day, delegations are expected to present something related to their country and national culture. Additionally, something in connection to their Scout movement is desired.

3.3.2 Future is Bright

Two separate topics related to the future, one personal and one general, will be treated on this day.

By thinking about their work as Rovers, participants can learn about how their experience translates to qualifications in their private life, be it through work-related, social or leadership skills. The other topics that can be tackled are technology, science and education and their impact on society. Through a mixture of interactive workshops and information stands, participants get to experience the human power to create and learn. At the same time, they can learn how to communicate these topics to other people.

3.3.3 Nature

Under this topic, issues like sustainability, biodiversity and climate change will be discussed and experienced through workshops and activities. The Rovers get to express their opinion and to accept others' and learn new ways how they can contribute to improvements to the current situation. In this discussion, approaches taken for the Roverway in terms of sustainability and environment protection can be analysed and might spark new ideas for this omnipresent topic. The



discussions can be combined with excursions to the local nature like lakes, forests and mountains.

3.3.4 Switzerland

This day is dedicated to the host country and our national holiday. The participants will learn a little bit about our history and be a part of our culture. Activities like local sports and music instruments can be tried. Through this, participants can also reflect on their own traditions and compare them.

At the same time, we hope to show the recognition the MSdS has in our country and how it is structured and governed.

3.3.5 Youth Empowerment

Through self-expression and team activities, participants get to explore what they can achieve as an individual and in a team. Activities vary from team sports, team challenges to writing, painting or dancing. By reflecting on their role in a team, the participants will work on their personal development and leadership skills.

This day can also be used to extend one's network, and the participants can find original ways of staying in contact.

3.3.6 Other Topics

Next to the activities related to the topics listed above, there will be an opportunity for ISTs and other volunteers to propose free activities, e.g. treasure hunts, bike excursions, traditional games from different countries, music and dancing.

Recurring elements like the Global Village, faith & believe tents and the food houses will not be missing.

In the evenings, there will be events planned, including a (second) opening and closing ceremony, concerts, campfires and night activities.

3.4 Participation & Involvement in the Planning

Rovers can contribute in two ways to the planning of the camp. On one side, the camp is planned and run by Rovers from all over Europe. On the other side, the participants will be involved in shaping the camp as a delegation through the Rover Reps.

The involvement in the planning and running of the camp will vary: some Rovers will support only during the camp as members of the IST, while others will be involved in organising the paths and participating in the committee. More details on this can be found in chapter 5.4 Staff. It should be noted that ISTs are also considered to participate and will experience a programme next to their support activities which might differ from the participants' programme.

For the participants, several opportunities will be created to contribute to the camp – both during the planning phase and during the camp itself. During the planning phase, the Rover Reps will play an important role in shaping the programme by providing ideas and feedback from the point of view of the participants. During the paths the roles of the participants might include



contributing to daily life as well as planning and managing activities. During the main camp, participants may contribute with assignments to the Culture Day or their delegation's tent. Throughout their stay, there will be opportunities to contribute to cultural exchange during planned activities (campfires, evening activities, opening and closing ceremonies).

3.5 World Centres

As Switzerland is home to both Our Chalet and KISC, both centres will be part of the programme activities. There will be the opportunity to visit the centres on paths but also to experience their offer during the main camp as well as during individual visits before or after the Roverway. We hope to learn from both centres through their expertise with international guests and at the same time enable them to get to know MSdS even better.



4. FINANCES

4.1 Revenue

We are expecting 5,000 participants and a total of 900 additional people who are needed to organise and run the camp. A financial calculation has been drawn up on this basis.

The contributions for the participants are deliberately kept low so that we can give as many people as possible the opportunity to take part in the Roverway 2028. If it is not financially possible for participants to take part in the Roverway, we can support some of them with a solidarity contribution.

4.2 Fee calculation

Category	Expected number of people	Fee in CHF
Cat. A	500	350
Cat. B	1,150	450
Cat. C	1,250	500
Cat. D	1,150	550
Cat. E	500	600
Path Leader Cat. A-E	250	300
IST	600	350
CMT and planning team	300	300

Thanks to the good network of MSdS in politics and business in Switzerland, we are confident that we can collect contributions for this project from a wide variety of sources. Experience from the Swiss National Jamborees has shown this. We are therefore confident to get some well-known sponsors on board. However, the sponsors ought to comply with the MSdS, WAGGGS and WOSM guidelines regarding ethics and be in line with the endeavours to run a sustainable camp.

4.3 Expenses

Although Switzerland is not known as a low-cost country, as Scouts we can benefit from our positive reputation in society. The previously mentioned good network helps us to procure many services and products at attractive conditions. Thanks to the valuable voluntary work of the IST and the planning team, we will also be able to realise many things without personnel costs.

4.4 Budget



The detailed calculations result in the following target figures.

Revenues	In CHF (rounded)
Participant fee	2,700,125
Solidarity Fund	-150'000
Contributions from third parties	300,000
Commercial income	236,000
Total revenue	3'086'125
Expenses	In CHF (rounded)
Accommodation	139,000
Catering	745,200
Transportation	535,000
Activities, paths and ceremonies	495,000
Logistics	510,000
Marketing and communications	220,000
CO ₂ -Compensation	50'000
Administration and planning	298'000
Contingencies, reserves	89'766
Total expenses	3'081'966
Result	4'159



5. LOGISTICS

5.1 Transportation

5.1.1 Public Transport

Switzerland is located in the heart of Europe and is therefore easy to reach by train or bus. There are also international airports in Zurich, Basel and Geneva.

Switzerland has a well-developed public transport infrastructure with a dense network of trains, buses and trams. Transport within Switzerland can therefore be ensured smoothly and reliably.

The Swiss Federal Railways (SBB) have been informed about a possible Roverway in 2028 and have assured us of the feasibility of this transport volume.

Travelling to the ceremony

If the ceremony is taking place at the campsite itself, the participants will be transported from the various arrival points to the campsite. A ceremony at a central location (Zurich) would facilitate its organisation.

Paths

Tribes receive day passes for the individual days of the paths, which can be used on the entire Swiss transport network. This provides a flexible, sustainable and attractive way of travelling through the various regions of Switzerland.

Departure

On the day of departure, various extra trips (buses, trains) will be organised so that all delegations can get from the campsite to the various railway stations and airports on time.

5.1.2 Equipment Transportation

Personal backpack

Trains and buses in Switzerland are equipped so that a rucksack with private equipment can be transported by public transport without any restrictions or additional costs.

Delegation material / tents

Most delegations are expected to travel via Zurich. From there, the camp site is easily accessible by public transport. Depending on the location of the opening ceremony, it may be possible to organise joint transport of delegation material to the campsite via a transport company. It is also possible for the delegations to organise the delivery of their equipment directly to the campsite.

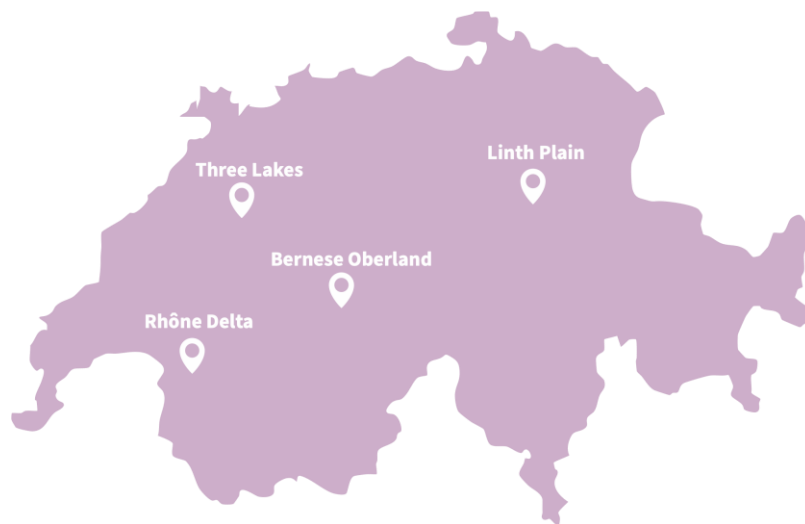


5.2 Campsite

The Roverway will take place on a large camp site in a characteristic Swiss setting. The following key criteria are being considered in the site selection process:

- Central location
- Good accessibility by public transport and suitable access for large delivery vehicles
- Adequate infrastructure, as outlined in section 5.3
- Costs aligned with the budget
- Consideration of natural hazards and overall safety
- Positive relationships with landowners and local authorities

Based on these principles, there are currently four potential regions to choose from. All of the proposed regions are excellent options. Ongoing discussions are taking place with local authorities and landowners, and the feasibility of each location is being examined in greater detail.



5.2.1 Interlaken - Bernese Oberland

The campsite in Interlaken was previously the venue for EuroLife 2001, hosting 1,500 Scouts, and is situated on a former military airfield. Nestled in the heart of the Swiss Alps, the site is close to two large Swiss lakes and in close proximity to the world-famous tourist destination of Interlaken. Every year, the area also hosts a large music festival with over 80,000 attendees, as well as a trucker and music festival attracting over 40,000 people. The campsite meets all required criteria and offers excellent infrastructure.

5.2.2 Murten - Three Lakes

The Murten campsite is set in the characteristic Swiss hilly landscape, with plenty of wooded areas around the site suitable for activities. Murten is a small town near Bern, located on the language border between the German-speaking and French-speaking regions of Switzerland. The region is home to three major Swiss lakes. Murten had applied to host the Swiss National Jamboree in 2022.



5.2.3 Ziegelbrücke/ Mollis – Linth Plain

This region is well-known among Swiss Scouts and Guides. In 2008, it hosted the Swiss National Jamboree, welcoming over 25,000 Scouts. The Ziegelbrücke campsite is located in the flat Linth Plain, surrounded by the steep Glarus Alps and two Swiss lakes. Zurich, Switzerland's largest city, is nearby and easily accessible. In 2025, the region will also host the largest sporting event in Switzerland, attracting over 350,000 people.

5.2.4 Rhône Delta between Aigle, Vionnaz, Bouveret and Villeneuve

This potential campsite is located in the French-speaking part of Switzerland. The famous Lake Geneva is nearby. The campsite is situated on characteristic Swiss farmland and is very well accessible. It lies at the foot of the Alps and is close to several glaciers and 4,000-metre peaks. The world-renowned cities of Montreux and Lausanne, home to many international organisations, are in immediate proximity to the campsite.

5.3 Infrastructure

Water in Switzerland is safe to drink directly from the tap and consists of treated groundwater and spring water. Participants can refill their water bottles at water points located near the sanitary facilities. Adequate sanitary facilities and showers are provided. The drinking water is regularly tested by the authorities for impurities. Wastewater is treated at a sewage treatment plant and returned to the water cycle.

5.3.1 Water Conservation

During the camp, we source water from the same location as the local population. Therefore, we use water carefully. Various measures, such as limited shower times and raising awareness among participants about water conservation, will ensure that there is sufficient water available for the essential needs of the camp participants throughout the Roverway. In the event of an interruption, emergency drinking water reserves will be available.

Electricity will be provided to Rovers at selected locations. We aim to use renewable energy wherever possible. In Switzerland, the majority of electricity is already generated from renewable sources. The cooking infrastructure will be planned during the course of the planning process, with a focus on environmental and sustainable solutions.

The camp takes place on cultivated land that is used for the production of animal feed. To protect this land, motorised vehicles are not permitted on the fields. Heavily frequented areas such as paths are protected with special soil protection measures.

Switzerland is a leader in recycling. We would like to pass this on to our guests. Different materials such as cardboard/paper, aluminium, PET bottles and glass are separated by the groups at the campsite. Companies that specialise in recycling collect and recycle them. This creates a closed cycle.

User groups such as the emergency services and information centres are reliant on weather-protected areas. We use temporary structures such as tents and containers for this purpose.



We rent these and set them up under expert supervision. After the camp, they will be dismantled and then on their way to their next assignment.

5.4 Staff

The MSdS has a large network of former leaders who are willing to volunteer for major projects such as the Roverway.

A great example of this is the Swiss National Jamboree 2022, which was planned and managed by a 500-strong camp management team. They were supported by around 5,000 volunteers. A lot of experience with volunteer work has been gained at that camp. For example, a tool was developed in which volunteers could sign up for shifts and tasks of their choice. This is also important to us for the Roverway. We want the volunteers to achieve personal progress and experience enriching days and not just participate in the Roverway as staff and support for the organisation.

When recruiting volunteers, it is important to us that we are not only able to recruit volunteers from Switzerland, but also international staff. Scouting is practised diversely in different countries, which means that a diverse staff allows for many different expectations and ideas to come together and create new experiences and solutions. It is therefore particularly important to us that the recommended guideline of one third of international volunteers is adhered to.

A particularly large number of young people are involved in the MSdS. Important functions and key positions are also filled by young people (under 30 years old). The above-mentioned Swiss National Jamboree also showed that this is possible and works well. There, we were able to gain a lot of experience in the monitoring and coaching of young volunteers by older volunteers. Of course, we are aware that there are also positions that require specific expertise that comes with age or many years of working in a certain professional field. These positions will be filled by appropriate experts for the Roverway. It is also our aim to specifically prepare the volunteers for both their general and specific tasks. We place great emphasis on diversity and inclusive collaboration, ensuring that everyone can find their place within the team and feel supported and valued.

For the Roverway, it is important to us that the work, as at most levels of the MSdS, is voluntary and honorary to a large extent.



6. SAFETY

Switzerland is a safe and uncomplicated destination with one of the lowest crime rates among industrialised countries.

In Switzerland, participants can expect sunny weather with occasional rainy days or evening thunderstorms during summer. Average temperatures are 24°C during the day and 14°C during the night.

We analyse the risks associated with large camps in Switzerland, develop a safety concept, and implement it. The safety concept must be approved by the MSdS and the local authorities, with input from health and police authorities. Additionally, the MSdS crisis management team will be involved from the planning phase of the event, alongside the advisory committees from WOSM and WAGGGS.

Experience from the Swiss National Jamboree 2022 shows that early cooperation with the authorities enables a smooth approval process and the consideration of the relevant risks in the campsite design.

Should the weather, or any other risk pose a challenge for individual participants or the whole camp, shelters and evacuation areas will be available for everyone in the nearby buildings. The weather and other detectable risks will be actively monitored in collaboration with a professional provider and a timely evacuation would be initiated.

Medical care for participants is provided at the campsite by officially recognised doctors and paramedics and is supplemented by public hospital in proximity. Leaders trained in emergency aid, the Swiss Air Rescue "Rega" and local doctors and hospitals are available for during the paths.

To protect the mental health and wellbeing of all participants, a prevention programme based on the MSdS, WOSM, and WAGGGS "Safe from Harm" framework will be implemented. The aim is to promote positive mental health factors and prevent abusive and harmful behaviours, including violence, assault, bullying, and discrimination. The campsite will also have trained teams on-site to provide mental health first aid.

The prevention programme, "Safe from Harm", ensures that all members – whether youth participants, leaders, volunteers, visitors, or members of the organising committee—are aware of their responsibilities and the actions required to prevent harm. This programme will result in the creation of clear policies for all levels of membership, along with specific protocols and training frameworks to guide the behaviour of leaders and volunteers, aiming to prevent any form of abuse, harassment, or exploitation.

Furthermore, a clear structure for reporting, documenting, and investigating any harmful incidents will be established. This will involve the various organisations involved, such as the on-site mental health first aid team, the Care Team, Path Leaders, Camp Crisis Team, the Swiss



Sports Integrity organisation, Police, the Public Prosecutor's Office, MSdS, WAGGGS, and WOSM. This structure will not only ensure the protection of victims and the effective resolution of cases but also enable lessons to be learned, preventing similar situations or repeat offenders in the future.

Participants will be advised on obtaining appropriate travel insurance for Switzerland.

The event and the Organising Committee will be adequately insured in collaboration with experienced Swiss insurance experts.



7. SUSTAINABILITY

The Roverway in Switzerland will implement a comprehensive strategy for environmental protection consisting of four key aspects: Local nature, Material, Food and Climate. The strategy is ambitious because it covers a large variety of different fields and aspects of an international camp. However, the MSdS is confident that it will achieve an ecologically sustainable Roverway – as this strategy was implemented before with great success at the National Jamboree in Switzerland in 2022 with more than 35,000 participants.

In the following, the four focal points of the strategy are further explained:

7.1.1 Local nature: Leave no trace!

A variety of measures such as fences or soil protection grids will be implemented to protect soil, plants, wildlife and water bodies within and around the areas used by the Roverway. Nature conservation initiatives for the Roverway are developed in close cooperation with local and national nature conservation organisations to ensure their effectiveness.

7.1.2 Material: Economical use of resources

Large quantities of materials are required to build and operate a camp for more than 5,000 people – production, transport, use, and disposal have a significant impact on the environment. When sourcing and using materials – whether large or small – we adopt a circular economy approach, following the principles of "reduce, reuse, recycle," complemented by "replace" and "repair". We prioritise the environmentally friendly and socially responsible production of materials. The transportation of materials is kept to a minimum, and transport vehicles are utilised as efficiently as possible.

7.1.3 Food: Environmentally conscious diet

Nutrition plays a particularly important role in the planning and implementation of a sustainable Roverway: firstly, because our diet has a significant impact on the environment, and secondly, because Roverway participants themselves can make a significant contribution to a sustainable camp in this regard. With sustainable meal plans, sensible grocery shopping and measures to reduce food waste, the impact of nutrition on the environment and nature will be minimised.

7.1.4 Climate: Minimise our greenhouse gas emissions

The aim of the Roverway is to minimise greenhouse gas emissions through the above measures in the transport, energy and food sectors. In addition, the topics of climate change and climate protection will be made tangible for the participants through programme blocks.

It is important to involve all stakeholders in the environmental and sustainability commitment – the various departments of the organisation team, but also the participants – both in the programme and in camp life. This is in order to meet all needs and because such a commitment is only possible if it is supported by everyone.



8. COMMUNICATION

As we prioritise clear and effective communication before, during, and after the camp, and as we aim to ensure broad awareness and engagement for Roverway 2028, we are committed to developing a comprehensive communications plan. The visibility of the camp is of central importance to us; therefore, our goal is to promote the camp not only to Scouts and Guides within the participant age range and those eligible for the International Service Team (IST), but also to a wider audience in order to support the growth of the European Scout and Guide Movement.

To achieve this, we will establish a website early on as the primary source of official information, which will be regularly updated with news, key details, and facts to ensure the accurate and timely distribution of event-related information. Additionally, we will create an online presence across social media platforms, which will reflect and further distribute the information available on the website. This not only maximises our reach but also fosters direct engagement with interested participants and potential volunteers, allowing us to gather their thoughts, expectations, and hopes for the camp. We also plan to utilise national and international press and media. In doing so, we aim to raise awareness about Switzerland, the camp, and all associated content in advance, building excitement for what promises to be an incredible experience.

Furthermore, we will focus on direct engagement with contingents in the lead-up to the camp, recognising the importance of maintaining a strong connection with them and the participants. In this context, we also want to highlight the key role of the Rover Reps. As representatives of their respective contingents, Rover Reps serve as vital communication links, ensuring that information reaches participants effectively and aligns with their needs and interests.

Beyond these digital and online efforts, we will actively promote and share the spirit of the Roverway 2028 through a targeted presence at international Scouting and Guiding events leading up to the camp, such as the World Scout Jamboree 2027 in Poland, where some participants will be within the ideal age range for the Roverway 2028. By engaging directly with our target audience at these events, we hope to inspire and encourage participation.

To ensure accessibility for our diverse audience, all official communications will be available in at least English, French, and German. As Switzerland is a quadrilingual country, we are accustomed to issuing all official communications simultaneously in multiple languages.

